



ALPINE PLYWOOD Corp.



C a b i n e t S t o c k G u i d e

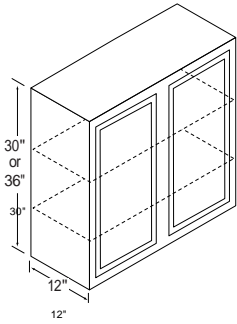
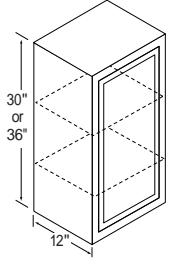
Evolving 🌲 Dedicated 🌲 Solutions

The products you want • The service you deserve

www.alpineplywood.com

Wall Cabinets

HIGHLIGHTED ITEMS ARE STOCKED AT ALPINE PLYWOOD



36" High Wall Cabinets (WT)

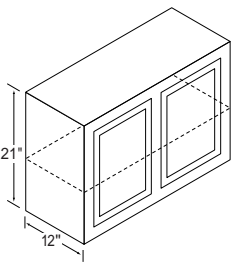
Item	
12WT*	W1236
15WT*	W1536
18WT*	W1836
21WT*	W2136
24WT*	W2436
27WT	W2736
30WT	W3036
33WT	W3336
36WT	W3636

*Single door. Single door wall units are reversible for right or left hinging, simply turn the cabinet over.

30" High Wall Cabinets (W)

Item	
9W*	W930
12W*	W1230
15W*	W1530
18W*	W1830
21W*	W2130
24W*	W2430
27W	W2730
30W	W3030
33W	W3330
36W	W3630
42W	W4230
48W	W4830

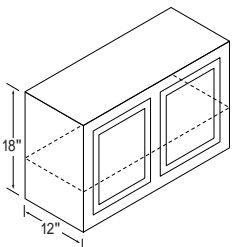
*Single door. Single door wall units are reversible for right or left hinging, simply turn the cabinet over.



21" High Wall Cabinets (R)

Item	
24R*	W2421
30R	W3021
36R	W3621
42R	W4221

*Single door.



18" High Wall Cabinets (Y)

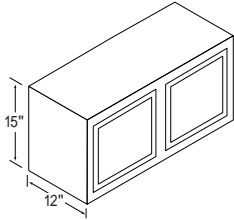
Item	
24Y*	W2418
30Y	W3018
36Y	W3618
42Y	W4218

*Single door.

Contact the sales department at 800-236-6324 for price and availability.

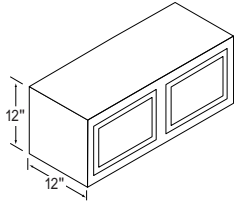
Wall Cabinets *cont'd*

HIGHLIGHTED ITEMS ARE STOCKED AT ALPINE PLYWOOD



15" High Wall Cabinets (X)

Item	
30X	W3015
33X	W3315
36X	W3615
39X	W3915

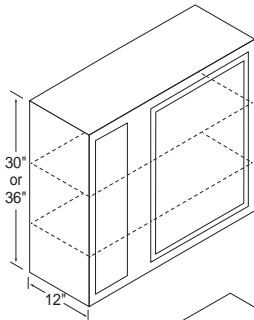


12" High Wall Cabinets (X12)

Item	
30X12	W3012
36X12	W3612

*Single door.

Wall Corner Cabinets

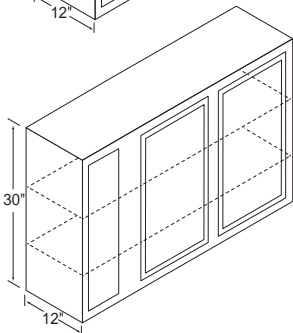


36" High Wall Corner Cabinets (WCT)

Item	
24WCT*	WC2436
36WCT*	WC3636

All lines may be pulled 4-1/2".

*Single door.



30" High Wall Corner Cabinets (WC)

Item	
24WC*	WC2430
36WC*	WC3630
39WC	WC3930
42WC	WC4230
48WC	WC4830

All lines may be pulled 4-1/2".

*Single door.

24WC Can pull to 28-1/2" - One 6" opening. One 6" Stile. One 9" opening for a 27 x 9-1/2" door.

36WC Can pull to 40-1/2" - One 6" opening. One 6" Stile. One 21" opening for a 27 x 21-1/2" door.

39WC Can pull to 43-1/2" - One 6" opening. One 6" Stile. Two 10-1/2" openings for two 27 x 11" doors.
One 3" Stile (between 10-1/2" openings).

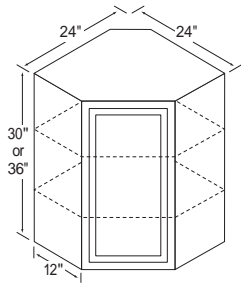
42WC Can pull to 46-1/2" - One 6" opening. One 6" Stile. Two 12" openings for two 27 x 12-1/2" doors.
One 3" Stile (between 12" openings).

48WC Can pull to 52-1/2" - One 6" opening. One 6" Stile. Two 15" openings for two 27 x 15-1/2" doors.
One 3" Stile (between 15" openings).

Contact the sales department at 800-236-6324 for price and availability.

Angle Wall Cabinets

HIGHLIGHTED ITEMS ARE STOCKED AT ALPINE PLYWOOD



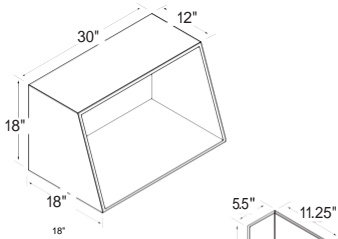
36" High Angle Wall Cabinet (AT)

Item	
24AT	AW2436

30" High Angle Wall Cabinet (A)

Item	
24A	AW2430

Specialty Cabinets

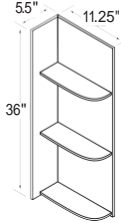


Microwave Cabinet (MW)

Item	
30MW	

For proper height, install the microwave cabinet under a 30X cabinet. Inside width is 28.5".

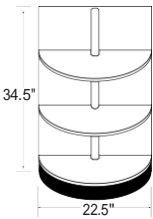
WWN
Shelf Size 3.25" x 11"



36" High Wall Whatnot Cabinet (WWN)

Item	
WWN	

Priced and packaged 2 per box. May be used right or left. All shelves come unattached. Width may be cut down 1-1/2" and height may be cut down 6".

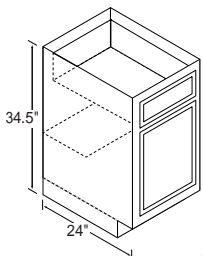


Base Whatnot Cabinet (BWN)

Item	
BWN 1/2	

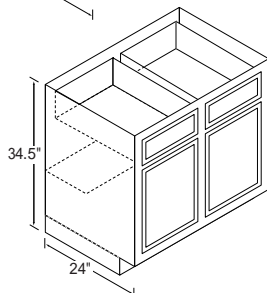
Half round is 12" deep.

Base Cabinets



Base Cabinets (B)

Item	
12B*	
15B*	
18B*	
21B*	
24B*	
27B* (3" Side Stiles)	
30B	
33B (3" Side Stiles)	
36B	
42B	
48B	



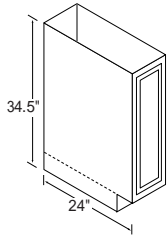
Contact the sales department at 800-236-6324 for price and availability.

Toe Kick is 4" high x 3" deep.

*Single door. Single door base units are reversible, simply hang door right or left, using holes predrilled in rails.

Cabinet Codes: numerical designation indicates cabinet width, letter identifies height.

Tray Cabinet

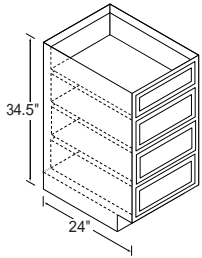


Tray Cabinet (T)

Item

9T

Drawer Cabinets



Drawer Cabinets (D)

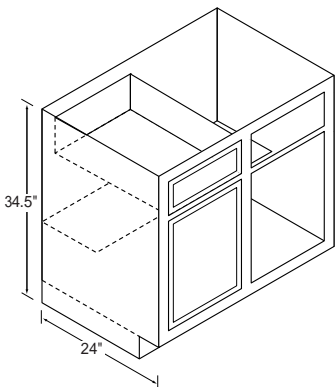
Item

15D

18D

24D

Base Corner Cabinets



Base Corner Cabinets (BC)

Item

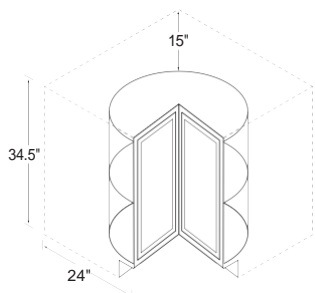
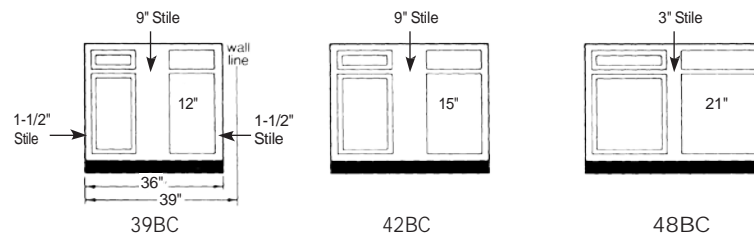
39BC

42BC

48BC

39BC must be pulled to 39" and may be pulled to 46".

42BC and 48BC may be pulled to 49".



Lazy Susan Corner Cabinet (LS)

Item

36LS

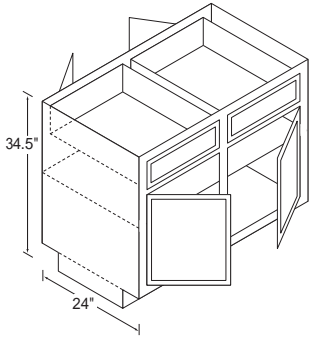
Lazy Susan is 34-1/2" high and takes up 36" on each wall.

Actual shelf is 24" diameter. Shipped without end panels.

Contact the sales department at 800-236-6324 for price and availability.

Peninsula Base Cabinets

HIGHLIGHTED ITEMS ARE STOCKED AT ALPINE PLYWOOD

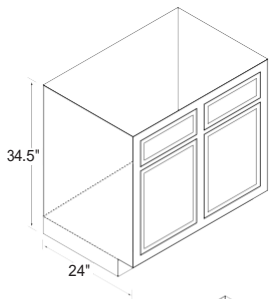


Peninsula Base Cabinets (P)

Item
36B-P
48B-P
48BC-P

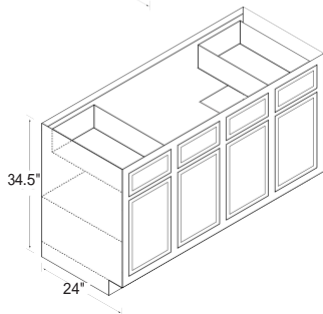
BC-P indicates Blind Corner Peninsula.

Range & Sink Base Cabinets



Range & Sink Base Cabinets (RBS)

Item
30RBS
33RBS (3" Side Stiles)
36RBS
42RBS

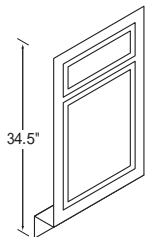


Sink Base Cabinets (SB)

Item
60SB
72SB

No shelf under sink (center section) and no back on cabinet.
 Combination unit consists of 15-30-15 or 18-36-18.
 Opening between drawers on 60SB is 33".
 Opening between drawers on 72SB is 39".

Sink Front



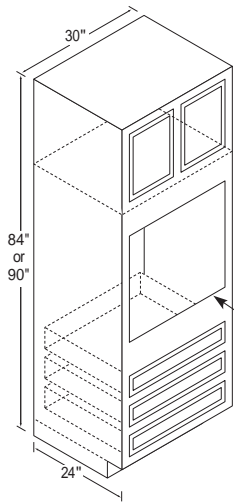
Sink Front (SF)

Item
18SF*

*Square edge.

Contact the sales department at 800-236-6324 for price and availability.

Oven Cabinets



90" High Oven Cabinet (OUT)

Item	
30OUT	U3090

Metal support rails included.

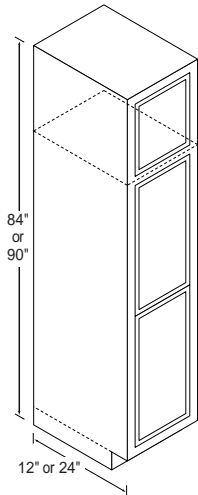
84" High Oven Cabinet (OU)

Item	
30OU	U3084

Metal support rails included.

To accommodate almost every type of oven, the opening can be cut from a minimum width of 21" to a maximum width of 28.5" and a minimum height of 27.5" to a maximum height of 60" (One or more lower drawers may need to be removed).

Broom Cabinets



90" High Broom Cabinets (BRT)

Item	
18BRWT (12" deep)	U189012
18BRBT (24" deep)	U189024
24BRBT (24" deep)	U249024

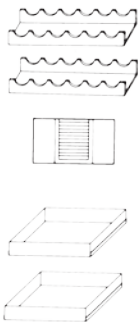
84" High Broom Cabinets (BR)

Item	
18BRW (12" deep)	U188412
18BRB (24" deep)	U188424
24BRB (24" deep)	U248424

No shelves included with Broom Cabinets.
Optional Shelf Kit Includes four (4) shelves and clips:

- 18BRWSK/BRWT kits
- 18BRBSK/18BRBT kits
- 24BRBSK/BRBT kits

Accessories



Accessories

Item	
Wine Rack Kit	36-1/2" x 10" (priced and packaged 2 per box)

Appliance Garage	17-5/8" x 18-1/4" (to fit beneath 24A)
------------------	--

Pantry/Base Roll-Out Tray	(priced per tray – packaged 2 trays per box)
---------------------------	--

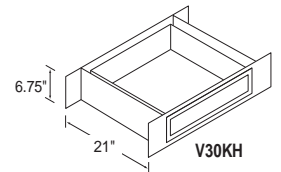
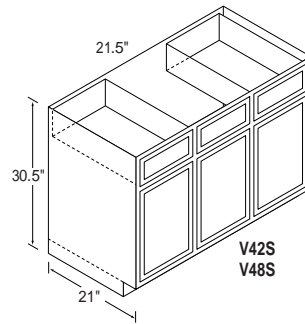
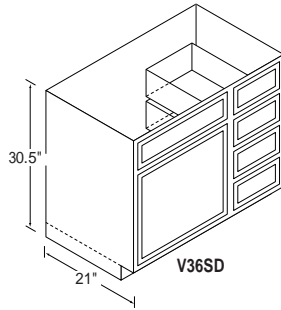
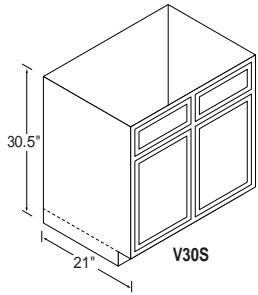
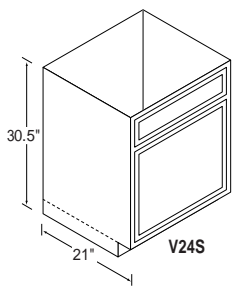
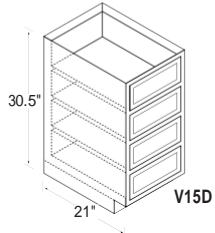
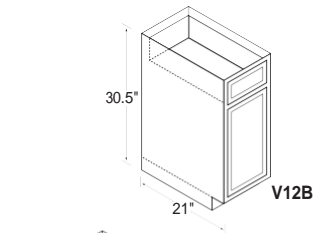
15BT	
18BT	
24BT	

Contact the sales department at 800-236-6324 for price and availability.

Vanity Cabinets

HIGHLIGHTED ITEMS ARE STOCKED AT ALPINE PLYWOOD

30.5" High Vanity Cabinets (V)



Item

V12B

V15D

V24S

V30S

V36SD

V42S*

V48S*

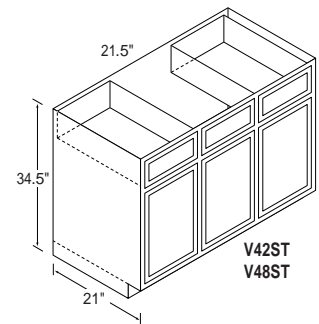
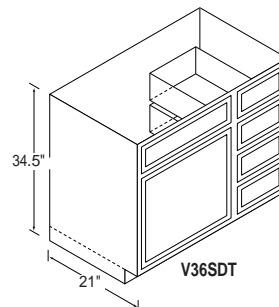
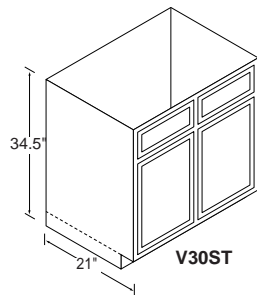
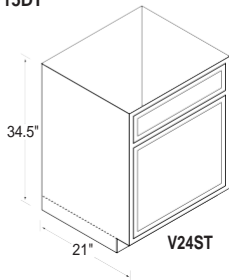
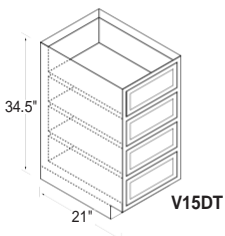
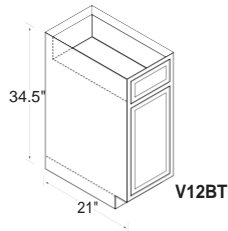
V30KH**

Opening between drawers on V42S/V48S is 21.5".

*Two outside working drawers.

**Can be cut down 3" on each side.

34.5" High Vanity Cabinets (VT)



Item

V12BT

V15DT

V24ST

V30ST

V36SDT

V42ST*

V48ST*

Opening between drawers on V42S/V48S is 21.5".

*Two outside working drawers.

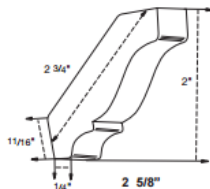
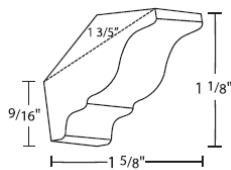
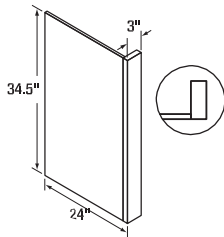
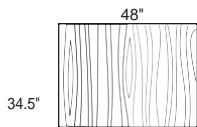
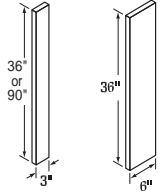
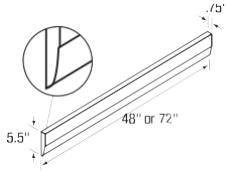
All Standard/Tall Vanities 21" Deep.

Contact the sales department at 800-236-6324 for price and availability.

Cabinet Codes: numerical designation indicates cabinet width, letter identifies height.

Miscellaneous Items

HIGHLIGHTED ITEMS ARE STOCKED AT ALPINE PLYWOOD



Item

Valance Boards

48" Val 3/4" x 5-1/2" x 48" (6 to ctn.)

72" Val 3/4" x 5-1/2" x 72" (6 to ctn.)

Filler Strips

3" Filler Strips 3"W x 36"L (12 to ctn.)

6" Filler Strips 6"W x 36"L (6 to ctn.)

3" Filler Strips 3"W x 90"L (12 to ctn.)

Touch-Up

Touch-Up sticks (12 to ctn.)

Maple End Covers (self-adhesive backing)

Base – 23-1/4" x 34-1/2" (6 to ctn.)

Oven – 23-1/4" x 90" (6 to ctn.)

End Panel Faced – EPF3 (faced with 3" stile)

May be used R or L 1/2" x 24" x 34-1/2" (4 to ctn.)

Small Crown Moulding - CMS

1 1/8" X 96"

Large Crown Moulding – CMLG8

2" X 96"

Toe Kick Moulding – TM4

4" X 96"

Large Toe Kick Moulding

8.5" X 96"

Quarter Round Moulding – KK-QR-GB

11/16" X 11/16" x 8'

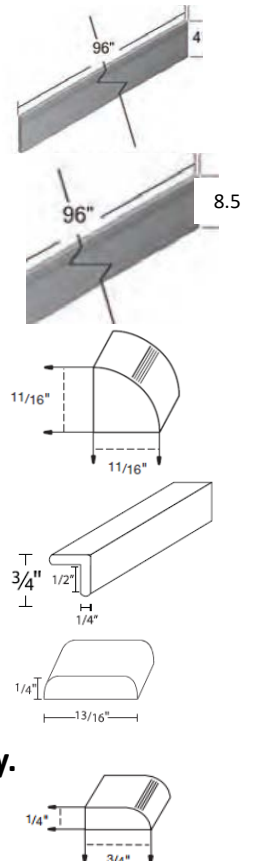
Outside Corner Moulding – OSC – 3/4"

3/4" X 96"

Batten Moulding – BT – 13/16"

13/16" X 96"

Scribe Moulding – 1/4" X 3/4"



Contact the sales department at 800-236-6324 for price and availability.

Prices are subject to change without notice.

Cabinet Codes: numerical designation indicates cabinet width, letter identifies height.